



Studio 1

USB Microphone



Marshall Electronics
www.mxlms.com

Warranty

Marshall microphones are guaranteed against defects in material and workmanship for one year from date of purchase. Should you encounter any problem with this unit, promptly contact the company you purchased it from for assistance. The original dated sales receipt will be necessary for any warranty claim. Do not send any unit directly to us without prior authorization from our service department! Warranty coverage is limited to repair or replacement (at our option) of the microphone, and does not cover incidental damages due to use of this unit, nor damage caused by accidental misuse of this product.



Congratulations on your purchase of the MXL® Studio 1 USB microphone. MXL® microphones are the result of world-class engineering and manufacturing capabilities. They are designed to provide you with outstanding performance and exceptional value. While we encourage you to review this entire manual, there are a few key points about handling this microphone that we want you to familiarize yourself with right from the start.

The MXL® USB mics are a professional quality, cardioid condenser studio microphone designed specifically for recording. Unlike microphones designed for live performance or lesser dynamic model microphones, **this instrument requires careful handling**. Hence, you should observe the following...

ALWAYS... handle the microphone carefully, avoiding sudden shocks such as dropping or bumping the microphone into other objects.

ALWAYS... maintain a distance of approximately 4 – 6 inches when speaking or singing into the microphone. You are encouraged to use a pop filter for added protection of the sensitive capsule and to shield the instrument from saliva and sudden bursts of air.

NEVER... tap the microphone to check if it's working. The RED LED behind the microphone's protective grill will tell you it's on and that the correct side is facing you.

NEVER... blow into the microphone to check if it's working. The RED LED behind the microphone's protective grill will tell you it's on and that the correct side is facing you.

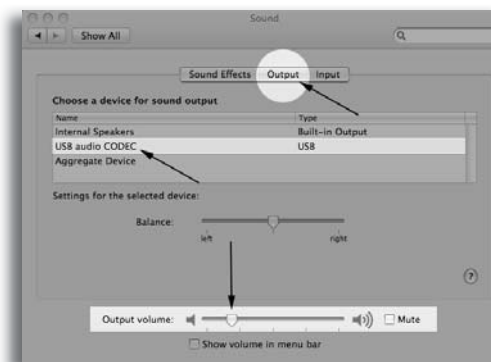
By following these few basic handling procedures, you can expect a long and trouble-free relationship with your new microphone. Again, thank you for your purchase of this outstanding MXL® microphone.

A Little Background Information

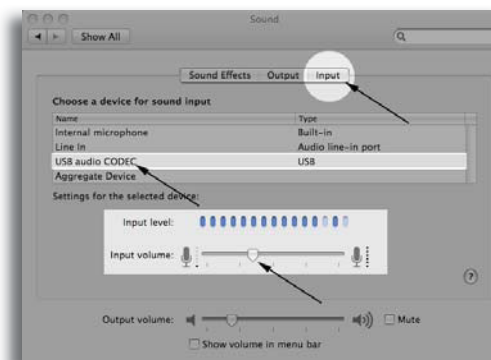
MXL® condenser microphones use what is known as a cardioid pickup pattern, which is more sensitive to sound waves arriving at the front of the microphone as opposed to those arriving from the sides or rear. Unlike other MXL® models, this microphone benefits from being a USB (Universal Serial Bus) device—meaning this is a plug and play microphone that will interface with Windows and Macintosh computers without the need for any special drivers. As a USB device, it carries the added benefit of not requiring an external microphone preamp, as is the case with most condenser microphones.

We've already mentioned the importance of proper handling, but should you find yourself recording an outdoor performance, you would be well advised to use a windscreen as protection for your microphone.

3. Click on the **Output** tab then select the device named **USB Audio CODEC**. You can adjust the headphone volume by moving the fader labeled **Output volume**.



4. Next click on the **Input** tab and select the device named **USB Audio CODEC**. You can adjust the microphone volume by moving the **Input Volume** fader. The gain of the microphone is very sensitive. For most applications the fader will be set more towards the left.



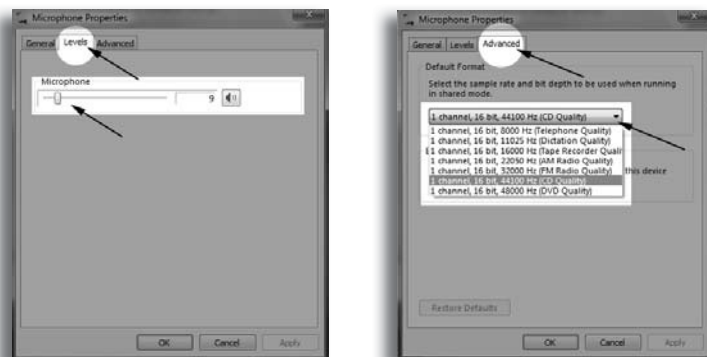
Your computer is now setup to use the MXL® Studio 1 USB microphone with most recording applications. Some applications will require additional settings to be changed within the program. Please see your recording software's manual for proper setup.

For More Information

For additional information about your MXL® USB microphone, how to contact technical support, as well as information on other products manufactured by MXL®, please visit us online at www.mxlmicro.com.

6. Click on the tab labeled **Levels** and adjust the **Microphone** fader. The gain of the microphone is very sensitive. For most applications the fader will be set towards the left.

To make adjustments to the sample rate and bit depth click on the tab labeled **Advanced** and select the appropriate setting in the drop down menu.



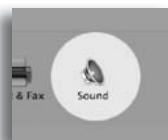
Your computer is now setup to use the MXL® Studio 1 USB microphone with most recording applications. Some applications will require additional settings to be changed within the program. Please see your recording software's manual for proper setup.

Connecting the Microphone to Your Computer (Mac OSX)

1. To select the Studio 1 USB as the default sound device click on the Apple icon at the top of the screen then select the **System Preferences...**



2. Click on the **Sound** icon.



Unpack Your Microphone

Begin by examining the contents of your MXL® USB kit.

You should have the following components:

- Protective case
- One MXL® Studio 1 USB microphone
- A 10-foot USB 2.0 high speed cable
- A desktop microphone stand
- Microphone stand mount adapter
- Owners manual
- Microphone applications guide

Getting Familiar With Your Microphone

In addition to speaking or singing into the side of the microphone with the RED LED facing you, you should also notice the 1/8" stereo headphone jack on the front. This is a stereo headphone jack for monitoring the microphone's signal as well as hearing the audio played back from your computer. The 1/8" jack accepts most headphones but the maximum headphone volume will vary by manufacturer and model so care should always be exercised when first plugging in.



Using the Supplied Desktop Microphone Stand

1. Screw the microphone stand mount to the desktop stand.
2. Separate the desktop stand's legs and place it on a flat surface.
3. While holding the microphone upright and firmly in one hand, secure the microphone to the desktop stand by screwing the black mounting ring into the microphone's base. The microphone should now sit securely in the desktop stand.
4. Adjustments can be made to the angle of the microphone by loosening the thumbscrew on the side of the stand adapter.
5. At this point, attach the end of the USB cable that matches the microphone's connector. The other end of the cable will connect to your computer's USB port.

Connecting the Microphone to Your Computer (Windows)

The MXL® Studio 1 USB microphone will operate with both USB 2.0 (high speed USB) and USB 1.1 data buses. We recommend you connect your microphone directly to the computer's USB port as opposed to using a USB hub. USB hubs have been known to interfere with the performance of various USB devices.

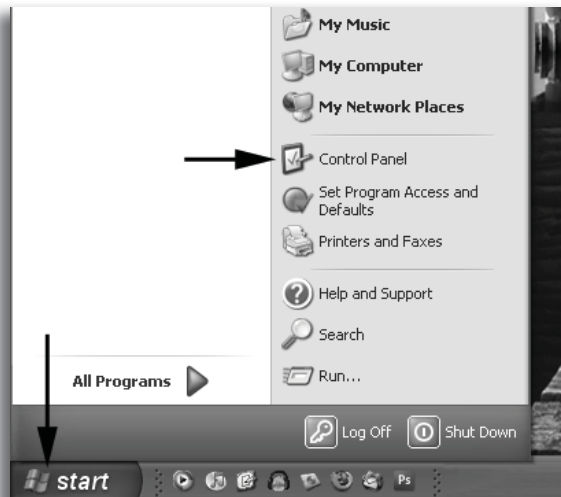
PLEASE NOTE: Audio and video recording can be very taxing to a computer's resources. For this reason, you should close any and all running applications that are non essential.

Please take the following steps to get connected:

1. If open, close your audio recording application. You will open it after the microphone is connected and operational.
2. Connect the remaining end of the USB cable to the computer's USB port. You will see a red LED illuminate behind the microphones grill and Windows will display the **New Hardware Found** dialog message.
3. Allow Windows time to identify the device.
4. In approximately one minute, Windows should display a dialog message stating that **Your New Hardware is Installed and Ready for Use**. After this first connection, Windows will require just a few moments to identify the microphone.

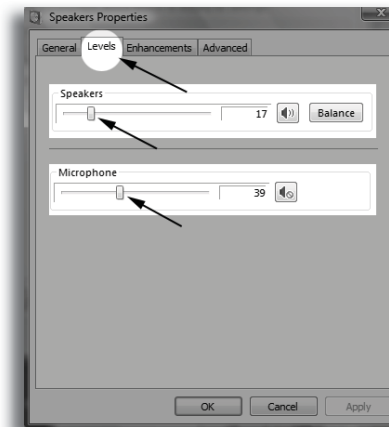
Initial Setup with Windows XP

1. To select the MXL® Studio 1 USB microphone as the default audio device go to the **Start Menu** and select **Control Panel**.



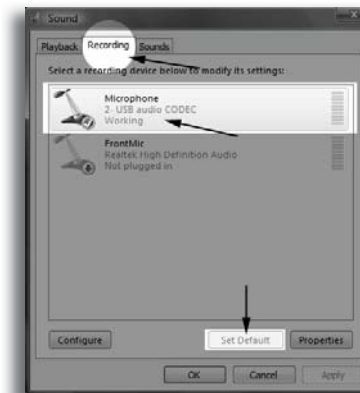
4. Click on the tab labeled **Levels**. The volume of the headphones can be adjusted by moving the fader labeled as **Speakers**.

To adjust the volume of the microphone signal directly to the headphones adjust the **Microphone** fader (this does not effect the volume of the microphone signal being recorded). Then click **OK**.



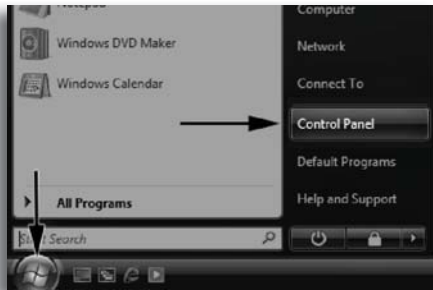
5. To set the MXL® Studio 1 USB microphone as the default input select the **Recording** tab in the Sound window. Highlight the microphone icon labeled **USB AUDIO CODEC** and click **Set Default**.

To make further adjustments to the microphone volume double-click on the microphone icon labeled **USB AUDIO CODEC**.

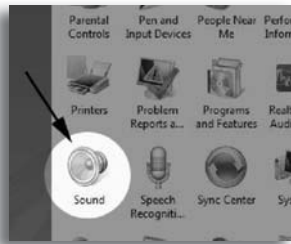


Initial Setup with Windows Vista

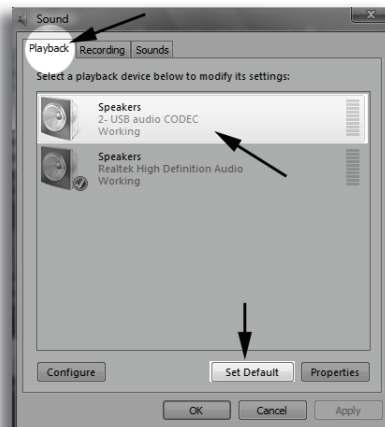
1. To select the Studio 1 USB microphone as the default audio device go to the **Start Menu** and select **Control Panel**.



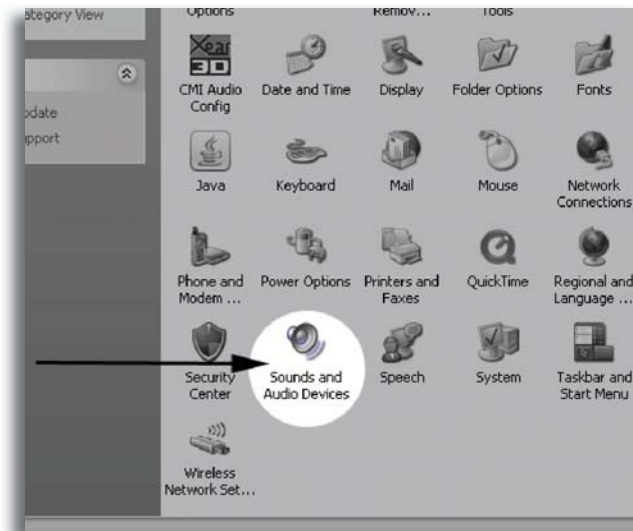
2. Double click the **Sound** icon.



3. Select the **Playback** tab. Highlight the speaker icon labeled as **USB AUDIO CODEC** and click **Set Default**. To make further adjustments to the playback volume double-click on the speaker icon labeled **USB AUDIO CODEC**.



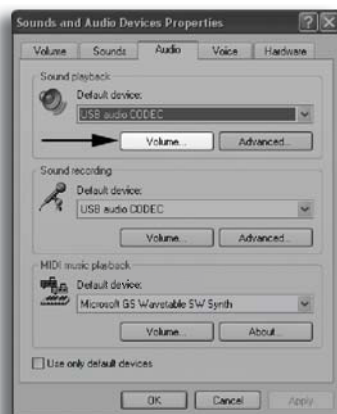
2. Select **Sounds and Audio Devices**.



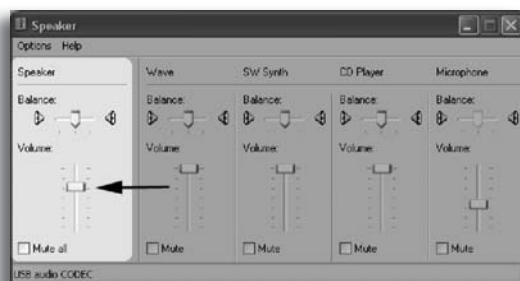
3. Click on the **Audio** tab and select **USB audio CODEC** as the default device for Sound playback and Sound Recording.



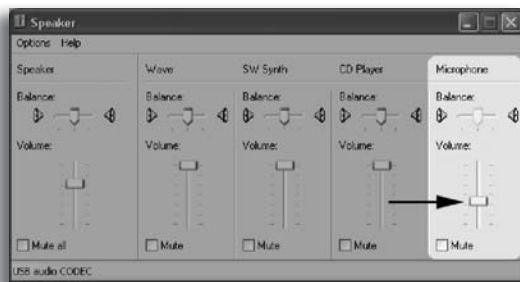
4. To adjust the headphone volume click on the **Volume** button under Sound playback.



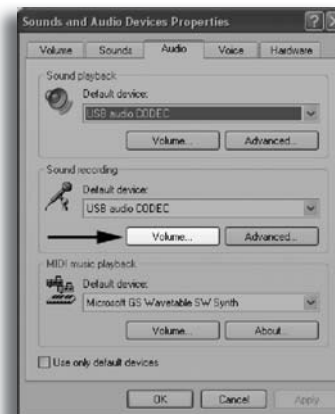
5. The master volume can be changed by moving the **Speaker** fader up or down.



6. To adjust the volume of the microphone signal directly to the headphones adjust the **Microphone** fader up or down (this does not effect the volume of the microphone signal being recorded).



7. To adjust the volume of the microphone signal that goes to the computer and is recorded click on the **Volume** button under sound recording.



8. Adjust the level by moving the **Microphone** fader up or down. The gain of the microphone is very sensitive. For most applications the gain will be set towards the bottom of the fader.



Your computer is now setup to use the MXL® Studio 1 USB microphone with most recording applications. Some applications will require additional settings to be changed within the program. Please see your recording software's manual for proper setup.